

Polska från Markaryd

Arr.:
K-J Ankarblom
2025-10-16♩ = 104
pizz.

5



7



14

15



20

25



arco

27



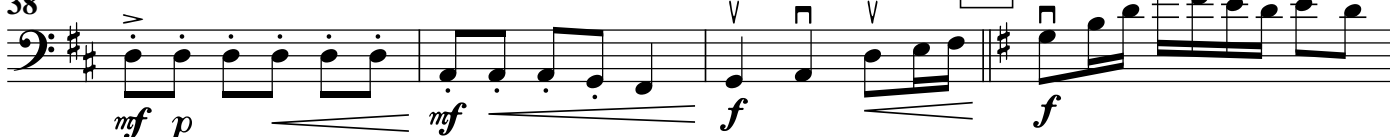
32

33



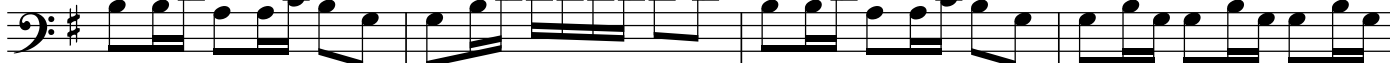
38

41



soli

42



46



Violoncello divisi 2

Polska från Markaryd

50 

54

Exercise 54 is a bass clef piece in D major, consisting of 16 measures. The melody is a simple scale exercise, starting on D2 and ascending to D3, then descending back to D2. The notes are: D2, E2, F#2, G2, A2, B2, C#3, D3. The exercise is divided into four groups of four measures each. The first group (measures 1-4) starts with a quarter rest, followed by the ascending scale. The second group (measures 5-8) starts with a quarter rest, followed by the descending scale. The third group (measures 9-12) starts with a quarter rest, followed by the ascending scale. The fourth group (measures 13-16) starts with a quarter rest, followed by the descending scale. The exercise ends with a quarter rest on D3.

[illegible]

64

mf *f* *mf*

74

74

sfz

79 Musical score for bass clef, key of D major, measures 79-81. Measure 79: D2 (half), F#2 (quarter), G#2 (quarter), A2 (quarter). Measure 80: B2 (quarter), C#3 (quarter), D3 (quarter), E3 (quarter). Measure 81: F#3 (quarter), G#3 (quarter), A3 (quarter), B3 (quarter).

84

84

89

The image shows the 89th measure of a musical score for 'The Rose Tree'. The measure is marked with a box containing the number '91'. The notation is on a single staff with a key signature of one sharp (F#) and a common time signature (C). The melody consists of eighth and sixteenth notes, with some rests. There are several accidentals (sharps and naturals) and dynamic markings (accents and slurs). The measure is divided into two parts by a double bar line.

94